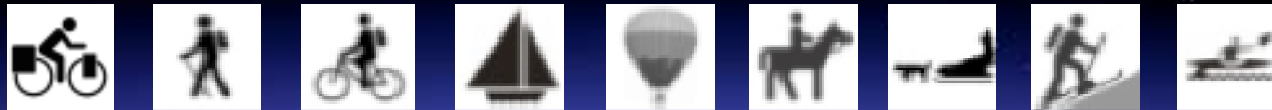


wikiloc

Trails of the World



Create
Explore
Share ...

wikiloc Upload trails | World Map | Search Sign in

Kanab Creek Wilderness-Lower jumpup springs to camp

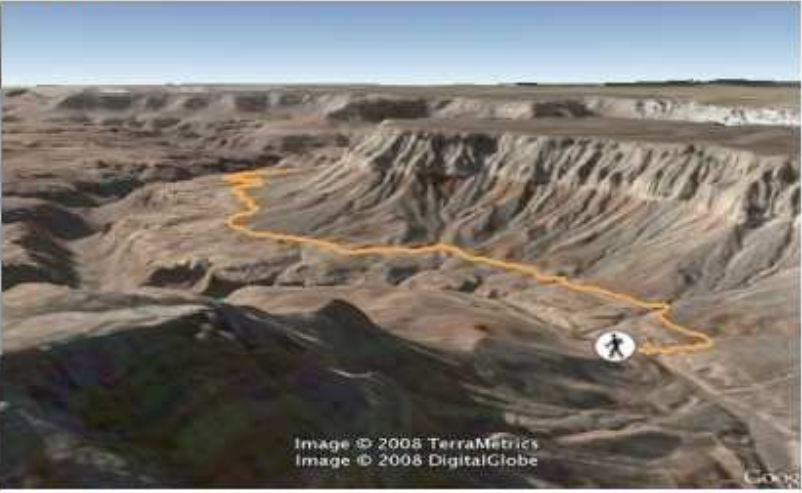




Image © 2008 TerraMetrics
Image © 2008 DigitalGlobe

near Big Springs, Arizona (United States) by [ClipperCreekWanderer](#)



Trail distance: 5.36 miles
Elevation min: 3,944 feet, **max:** 4,238 feet
Accum. height uphill: 446 feet, **downhill:** 535 feet
Difficulty level: ● Moderate
[See in Google Earth](#)



Show your favorite trails

[Upload your trail](#)

Discover new trails

[Google Earth \(KML\)](#)

- [Mirror Lake & Lone Eagle Peak](#) (United States)
- [Jasper Skyline Trail](#) (Canada)
- [Ruta del Cares](#) (España)
- [Volcan Ceboruco](#) (Mexico)
- [Mount Haruna cycling](#) (Japan)
- [Aconcagua](#) (Argentina)
- [Platia to Rohari](#) (Greece)
- [Guzelbahce-Balcova](#) (Turkey)
- [Col de Balme - Le Tour](#) (France)
- [Páskaferð, Landmannalaugar og Vatnajökull](#)
- [Titan Desert Mountain Bike Race](#) (Morocco)
- [104707 more >>](#)

Find trails

[Search place](#)

examples: "New York", "Moab" or "Jasper"

... trails anywhere around the planet

Create new trail

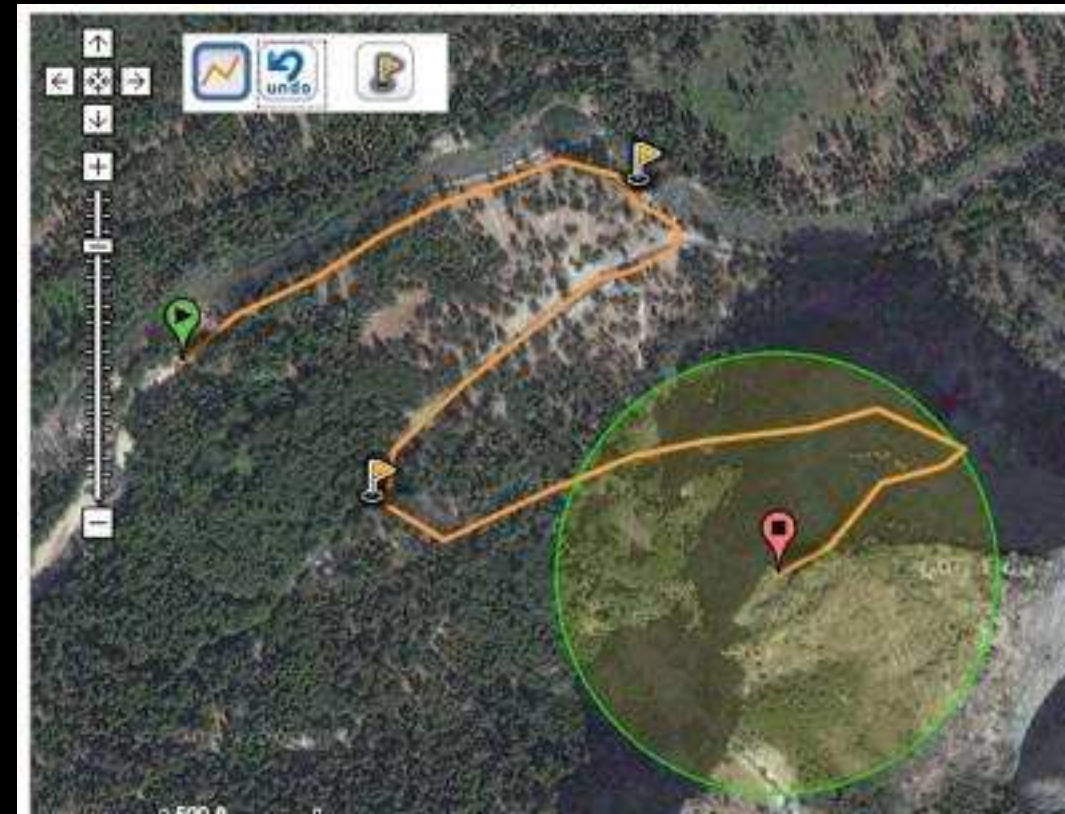
- GPS

Selecciona el fichero GPS con las rutas y puntos de interés a publicar:

Browse...

Subir el fichero

- Draw route on map



Share your trail

de pisos y apartamentos en Santa Cristina d'aro.

Anuncios Google

Cristina d'Aro - Roca Rovira - Romanya de la Selva - Santa Cristina d'Aro

favorites | Download | Send to a friend | See in Google Earth

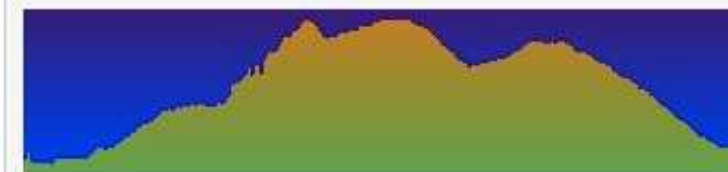


Imagery ©2009 DigitalGlobe, Cnes/Spot Image, Institut Cartogràfic de Catalunya, GeoEye - Terms of Use

Nearby trails »

- Romanyà - Puig d' Arques (mountain bike)
- Pont penjat-Mas de Can Pere Pla-Puig Palet-Mas Català -Mas Vilobi (hiking)
- Les Gavarres al Compiert (mountain bike)
- El castell de Sant Miquel i el santuari dels Àngels (mountain bike)
- Trialeras por el mazizo de la Ardenya (mountain bike)

Author: [MIQFELIU](#)
(1 shared tracks)



Activity: hiking
near Santa Cristina d'Aro, Catalunya (España)
Trail distance: 11.47 miles
Elevation min: 0 feet, **max:** 1,257 feet

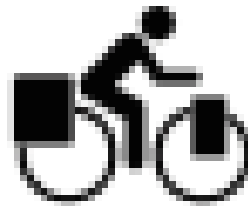


4 times, **downloaded:** 2 times

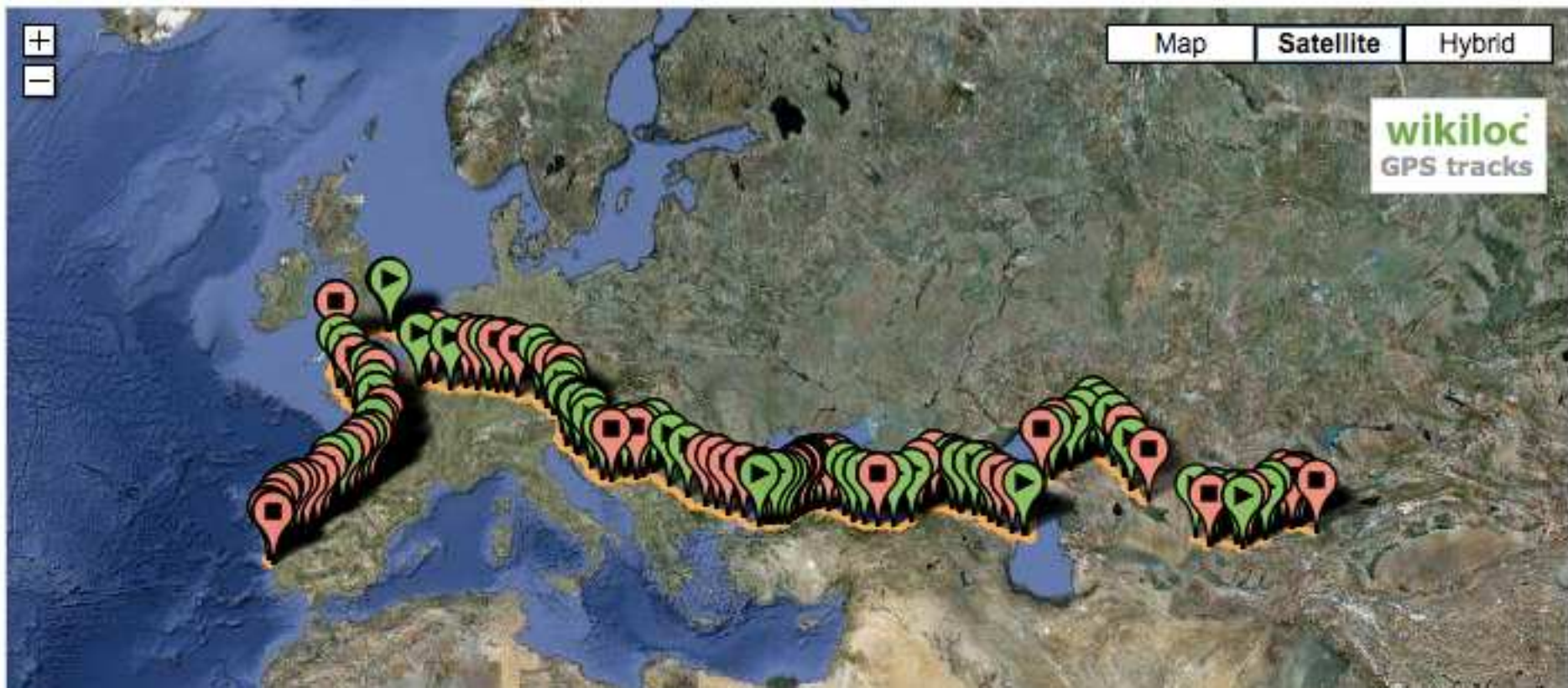


YOU ARE HERE Track my progress

Track my progress



[Track my progress in Google Earth \(much faster, if you have Google Earth\)](#)



Explore!

<http://www.wikiloc.com>

Google Earth

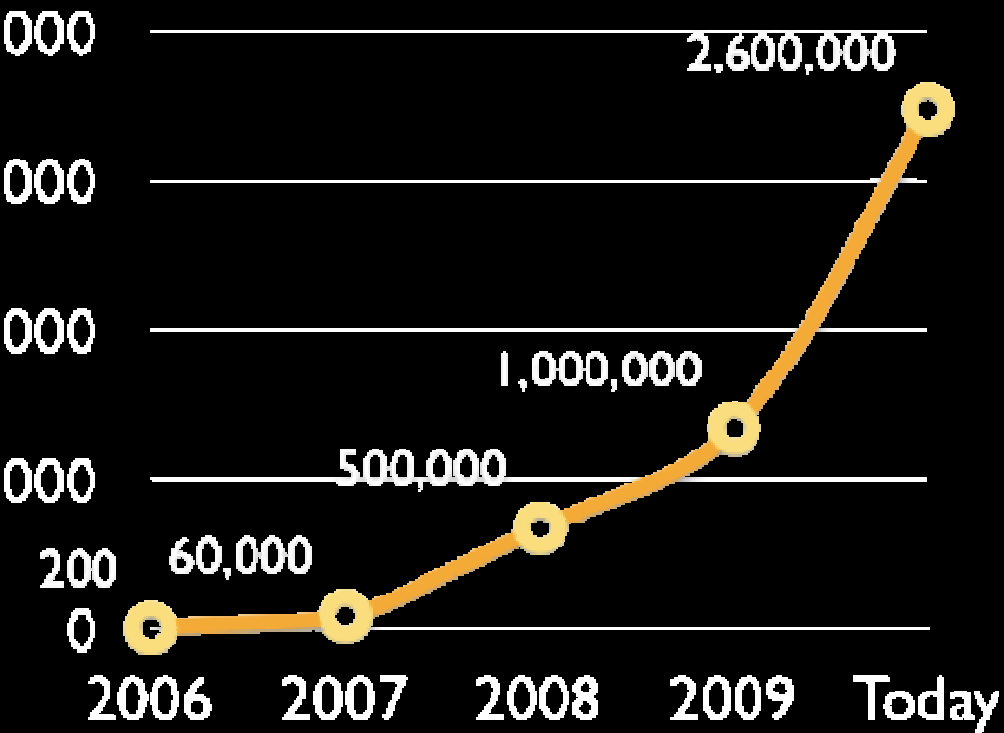
The screenshot displays the Wikiloc website interface. At the top, there are navigation links: "wikiloc", "Subir rutas", "Mapa del Mundo", and "Buscar". Below this, there are tabs for "Populares (20)", "Más recientes", and "Tus rutas". A list of routes is shown, including:

- Guadalajara - Mazamitla**: 142.88 kilómetros, Fácil, por pepelopez, cerca de Ciudad Granja, Jalisco (Mexico). (Walking icon)
- torre uno**: 25.76 kilómetros, Difícil, por Jose Eduardo, cerca de Santa Ana Tepetitlán, Jalisco (Mexico). (Bicycle icon)
- Bosque la Primavera**: 39.74 kilómetros, Moderado, por pepelopez, cerca de Santa Ana Tepetitlán, Jalisco (Mexico). (Bicycle icon)
- postes, cuxpala, observatorio, tala**: 45.78 kilómetros, Difícil, por Jose Eduardo, cerca de Santa Ana Tepetitlán, Jalisco (Mexico). (Bicycle icon)

On the right side, there is a search bar with "Guadalajara" entered, and buttons for "Buscar lugar" and "Búsqueda avanzada". Below the search bar is a 3D satellite map of a mountainous region. An orange line traces a trail across the terrain. The map includes navigation controls (arrows, zoom in/out) and a scale bar. A "Map" button is visible in the top right corner of the map area.

Evolution of Wikiloc

Monthly page views



tourism Challenge 2009
POWER OF PLACE
Shaping the Future of Destinations

WINNER

Ashoka's
Changemakers

85.000 users
105.000 trails
155.000 photos & videos
15 languages